

THE OPTIONS

Pull strap



the options

Pull strap

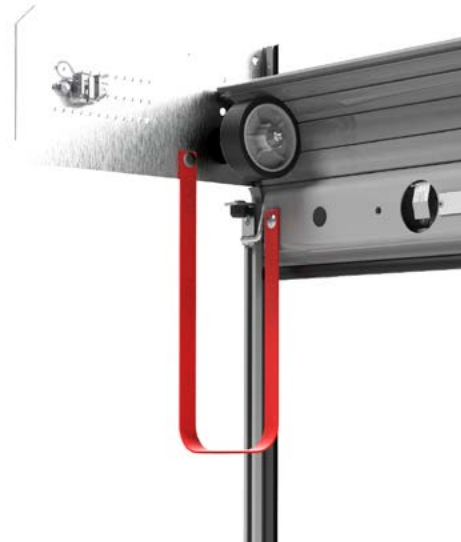
This option is very useful for height shutters, when it's not possible to catch the handle to close the shutter. We can install in this situation a pull strap to close the shutter even if the handle cannot be reached.

2 models are available :

« Standard » pull strap

A red strap with MCD logo of about 20mm width is installed between the top side panel and the bottom profile with handle.

This location insures the strap to stay always inside the compartment when shutter is closed, without falling outside, for a better aesthetic and longer lifetime.



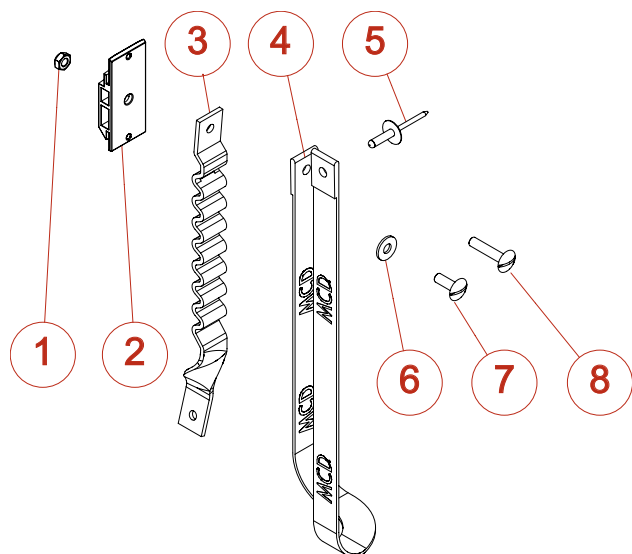
« Rubber » pull strap

A red rubber pull strap of about 25mm width is installed on the vehicle between the bottom profile with handle and the middle of the shutter height, on the compartment walling.

The rubber part insures this strap to stay always straight in the compartment in closed and opened shutter position in order to don't disturb user with a strap facing the locker equipment.



The options
Pull strap
Exploded view



The options **Pull strap**
elements list

N°	Ref	Description
1	3503	ZINC COATED LOCK NUT M6
2	4250	STRAP BRACKET INSTALLATION
3	4352	RED RUBBER PULL STRAP
4	4253	RED STANDARD PULL STRAP
5	3246	RIVET 4.8X17
6	3304	STAINLESS RING L6
7	3325	STAINLESS SCREW TRL POELIER 6X16
8	3337	STAINLESS SCREW TRL POELIER 6X30