

THE CLOSING SYSTEMS

Bar lift
Handle



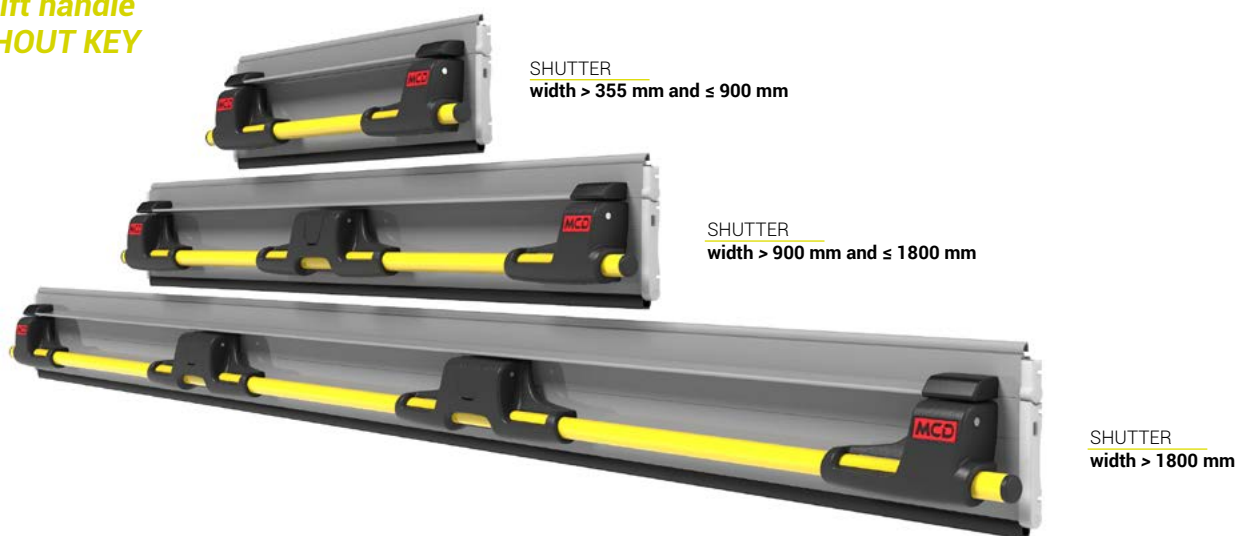
Bar lift handle CLOSING SYSTEM

The closing of the shutter is done thanks to a bar tube located in front of the shutters available with or without key locking mechanism. The door is operated by this tube and is automatically locked when lowering on adjustable bottom blocking striker located at the front of each track.

The locking of the shutter, is done thanks to a stainless locking rode in 2 points integrated in the bottom profile (left and right side of the tracks). Only 1 cylinder lock pull the lockign rode to unlock the whole shutter. This is a safe, fast and single operation.

It is stopped in opened position by stopper located at the top of each track.
We propose, following shutters quantity, to personalised the handle with your company name.

Bar lift handle WITHOUT KEY



Bar lift handle WITH KEY



Bar lift HANDLE

Compatibility Options / Bar lift handle

	Pull strap	Interior unlocking	Sensors	Electric locking system	LED lighting
Bar lift handle	•	•	•	•	•



BE CAREFUL

All options are not compatible with all closing system.



Top stopper

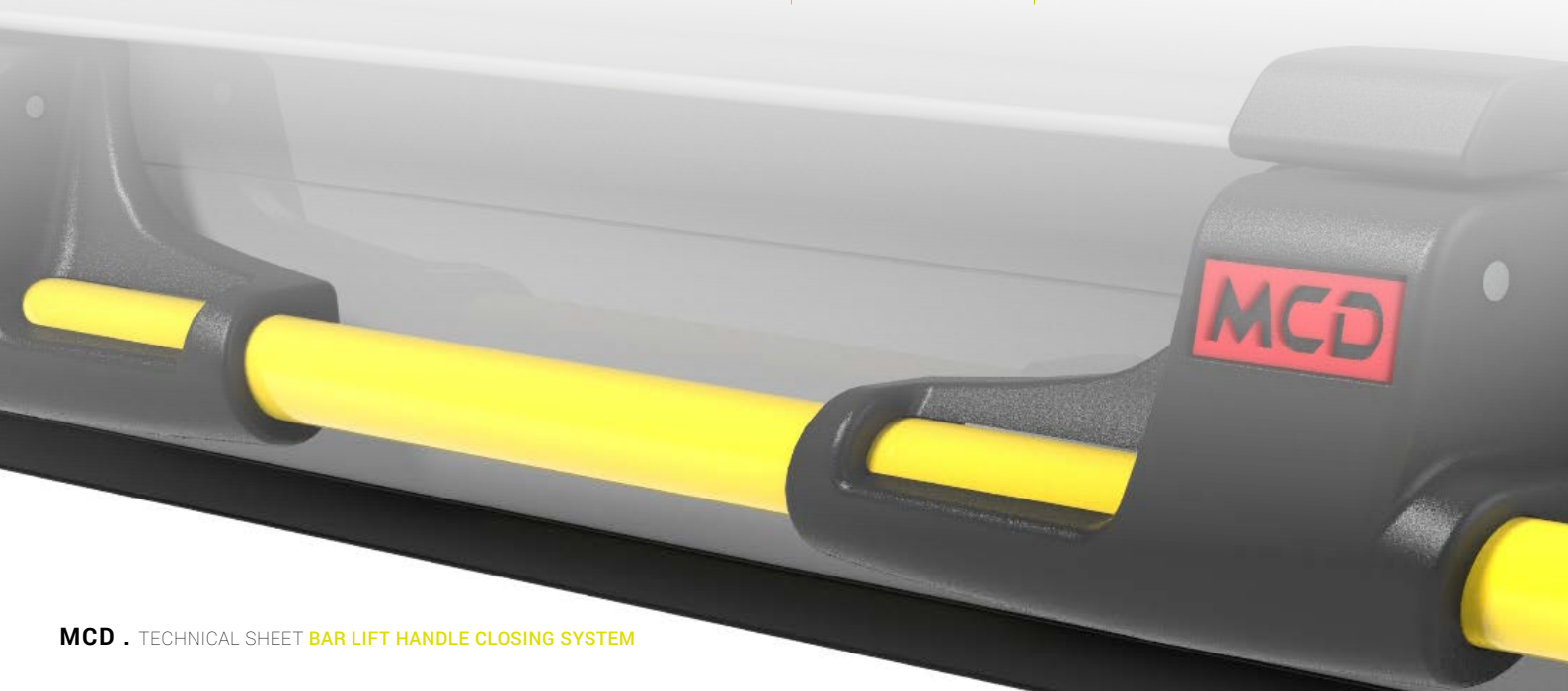
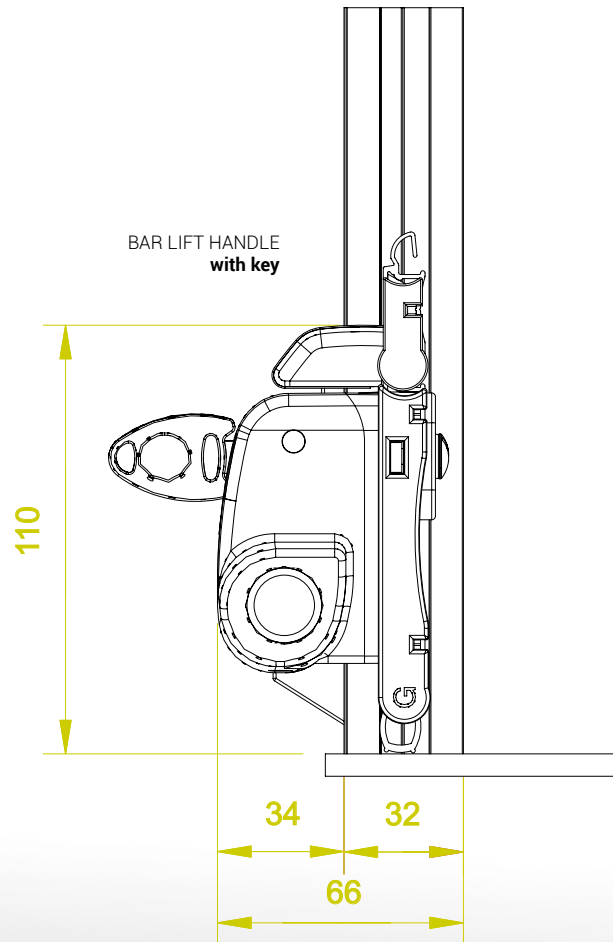
The shutter is handled thanks to the bar tube (yellow colour on the drawing) and is stopped in the upper part against the top stoppers (red part). The shutter is closed when lowering it in bottom blocking striker installed on each side track.



Bottom locking

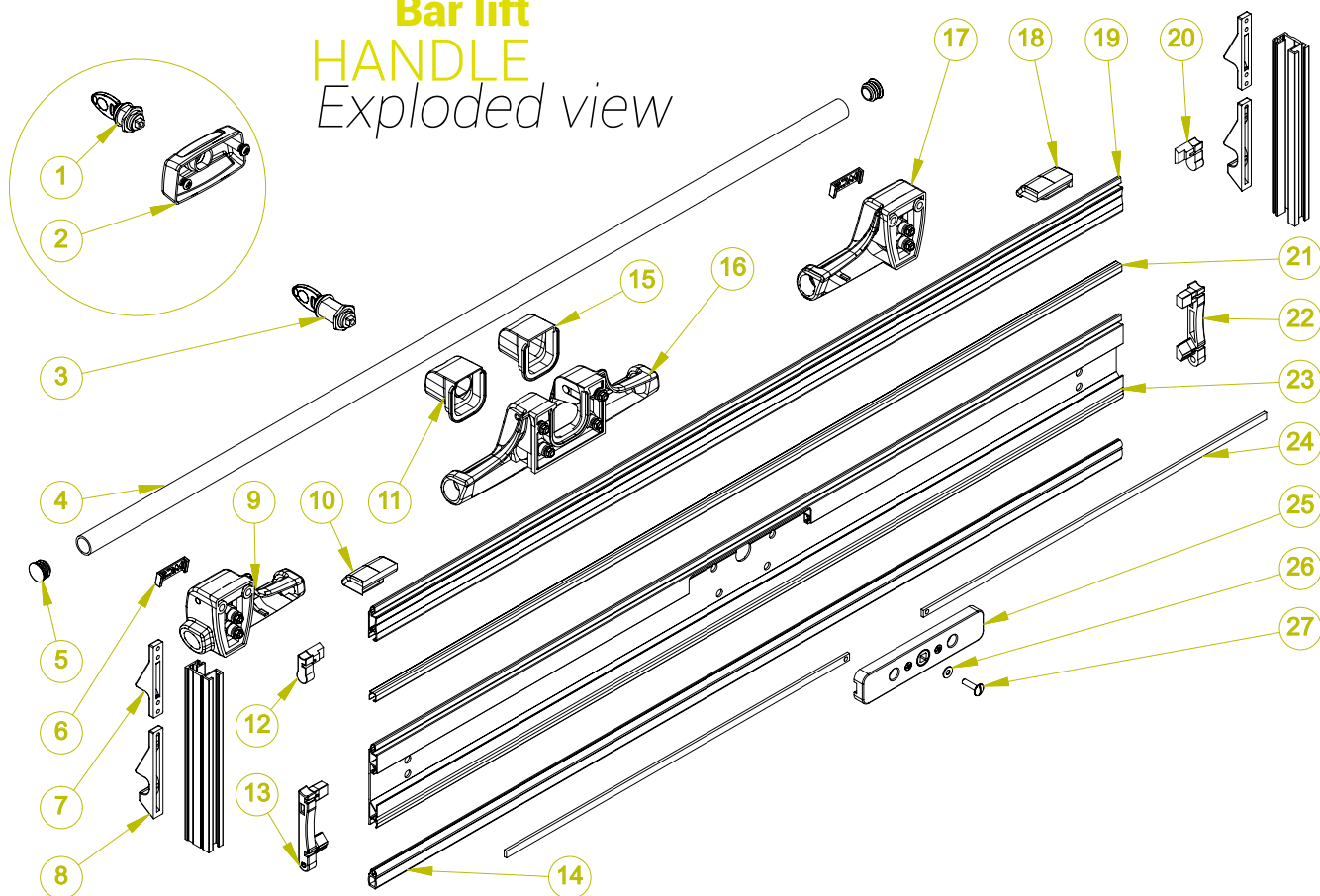
Closing
systems

Bar lift
HANDLE
Dimensions



Closing
systems

Bar lift
HANDLE
Exploded view



Bar lift handle
elements list

N°	Ref	Description
1	3850 à 3899	LOCK CYLINDER FOR MIDDLE BLOCK HOLDER
2	4509	LOCK CYLINDER BLOCK HOLDER
3	3800 à 3849	LOCK CYLINDER FOR MIDDLE HANDLE LEVER
4	1400	ROUND ALUMINIUM TUBE DIAMETER 20MM (ML)
5	4210	END CAP FOR ROUND ALUMINIUM TUBE DIAMETER 20
6	4225	MCD LOGO INSERT
7	94214	PVC TOP STOPPER WITH RIVETS
8	94223	BOTTOM BLOCKING STRIKER WITH RIVET
9	98213	LEFT HANDLE LEVER
10	4517	LEFT STOPPER FOR REINFORCED SLAT
11	4507	LOCK HOLDER INSERT FOR MIDDLE HANDLE LEVER
12	4007	LEFT END CAP FOR REINFORCED SLAT
13	4017	LEFT END CAP FOR BOTTOM PROFILE
14	2010	BOTTOM SEAL (ML)

N°	Ref	Description
15	4508	INSERT WITHOUT LOCK FOR MIDDLE HANDLE LEVER
16	98215	MIDDLE HANDLE LEVER
17	98214	RIGHT HANDLE LEVER
18	4518	RIGHT STOPPER FOR REINFORCED SLAT
19	1003	REINFORCED SLAT PROFILE (ML)
20	4008	RIGHT END CAP FOR REINFORCED SLAT
21	2004	INNER SLAT SEAL (ML)
22	4018	RIGHT END CAP FOR BOTTOM PROFILE
23	1101	ALUMINIUM BOTTOM PROFILE (ML)
24	3220	STAINLESS FLAT LOCKIGN RODE 8X3 (ML)
25	8212	CREMONA SET
26	3319	STAINLESS RING M5
27	3386	STAINLESS SCREW TRL POELIER 5X20