

ALUKITS

Alukit

FORD Transit (H2)

Alukit

FORD Transit (H2)

The product is made of a fibreglass frame adapted to the rear shape of the vehicle and a roller shutter. It replaces the traditional rear swing doors of the van and fits exactly the previous location of the original doors.

The installation is reversible because it doesn't require any drilling, cutting or welding of the original van bodywork.

Installation required only 3 to 4 hours.

This is the perfect solution to avoid space and safety issues for users generated by classical swing doors opening on the road.

The fibreglass frame is delivered in original white colour of the van manufacturer. The shutter could be delivered in powder coated following RAL colours or anodised finish.

The original white colour of the van manufacturer is made of spray liquid paint while the fibreglass frame is made with gelcoat. MCD cannot guarantee the perfect colour matching of both process, some slight colour difference could be visible.



Advantages

- Vehicle aesthetics preserved
- Doesn't require any bodywork modifications (no drilling, cutting, welding or painting to do)
- Original doors can be restored
- Simple and quick installation time (3 to 4 hours only)

BE CAREFUL

Take care to double check carefully the exact vehicle model you want to equip. Our frame is not compatible with all vehicles height available.



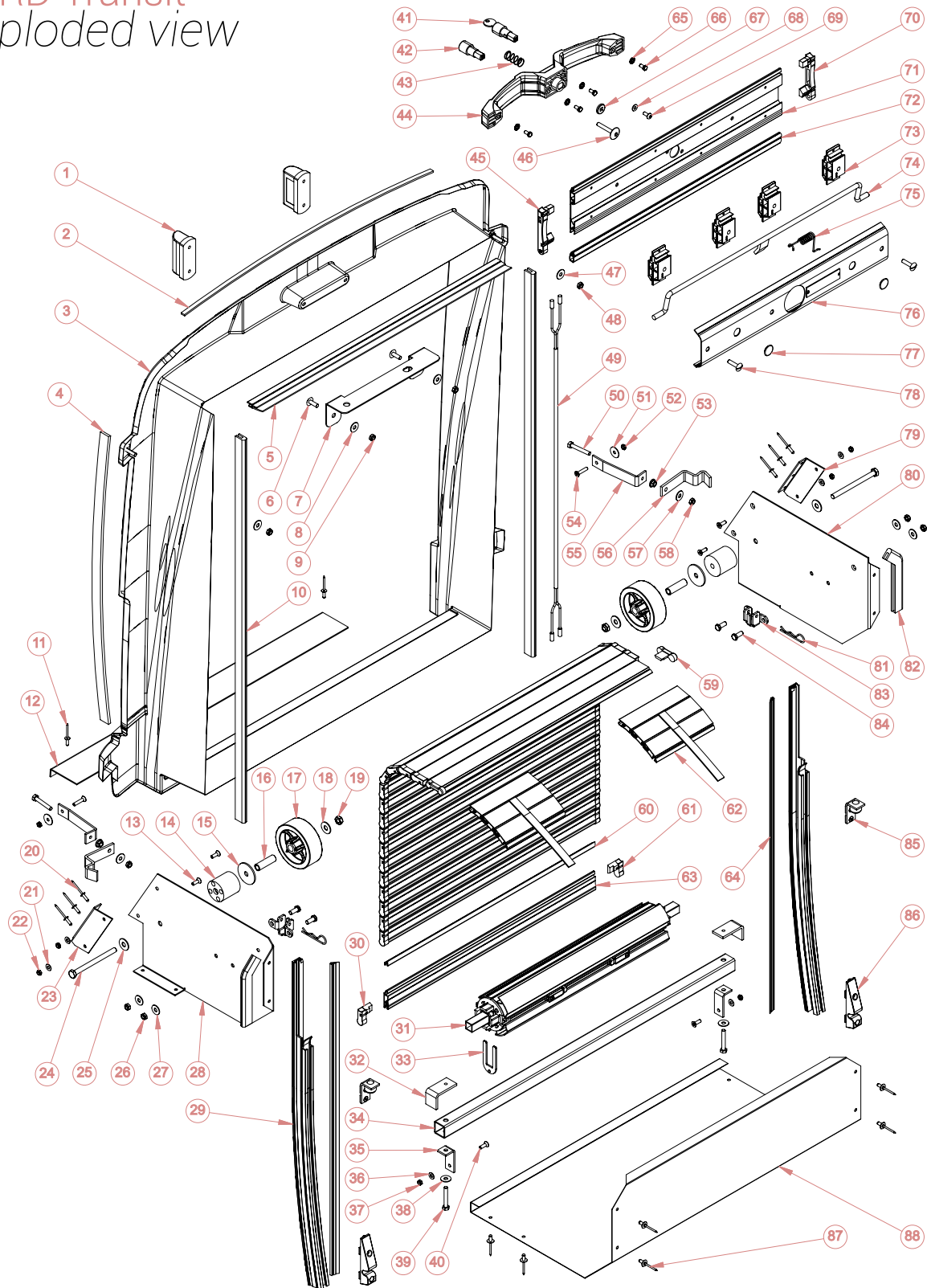
FORD Transit (H2)

Passing width : **1354 mm**

Passing height : **1650 mm**



Alukit
FORD Transit
Exploded view



Alukit FORD
elements list

| N° | Ref | Description |
|----|-------------|--|
| 1 | 6020 | REGISTRATION PLATE LIGHTING 12/24V |
| 2 | 2045 | SIMPLE FACE FOAM SEAL (ML) |
| 3 | 6450 | FIBREGLOSS FRAME FORD TRANSIT H2 2013/07 |
| 4 | 2048 | PVC FOAM SEAL 5X20 (ML) |
| 5 | 2025 | ALUTRUCK SEAL (ML) |
| 6 | 3325 | STAINLESS SCREW TRL POELIER 6X16 |
| 7 | 6451 | TOP INSTALLATION BRACKET FORD TRANSIT |
| 8 | 3304 | STAINLESS RING L6 |
| 9 | 3503 | ZING COATED LOCK NUT M6 |
| 10 | 6613 | PVC CLIP SEAL (ML) |
| 11 | 3245 | ALUMINIUM / STAINLESS RIVET 4X12 |
| 12 | 6457 | SILL PLATE FORD TRANSIT |
| 13 | 3330 | STAINLESS SCREW TF POZIDRIV 5X16 |
| 14 | 4107 | PVC SPACER |
| 15 | 3523 | ZING COATED RING M8X40X2.5 |
| 16 | 3109 | STEEL SPACER |
| 17 | 4110 | GUIDING WHEEL DIAMETER 80MM |
| 18 | 3301 | STAINLESS RING L8 |
| 19 | 3506 | ZING COATED LOCK NUT M8 |
| 20 | 3245 | ALUMINIUM / STEEL RIVET 4X12 |
| 21 | 3319 | STAINLESS RING M5 |
| 22 | 3510 | ZING COATED LOCK NUT M5 |
| 23 | 6056 | LEFT SIDE PANEL CONNECTION |
| 24 | 3300 | STAINLESS SCREW TH 8X100 |
| 25 | 3301 | STAINLESS RING L8 |
| 26 | 3503 | ZING COATED LOCK NUT M6 |
| 27 | 3304 | STAINLESS RING L6 |
| 28 | 6054 | LEFT SIDE PANEL FORD TRANSIT |
| 29 | 1300 | STANDARD SIDE TRACKS (ML) |
| 30 | 4002 | LEFT END CAP FOR 30MM SLAT |
| 31 | 8002 | ALUMINIUM BALANCER |
| 32 | 6453 | CROSS BAR BRACKET FORD TRANSIT |
| 33 | 3108 | BLOCKING FORK |
| 34 | 6452 | CROSS BAR FORD TRANSIT |
| 35 | 6454 | SIDE PANEL BRACK FORD TRANSIT |
| 36 | 3319 | STAINLESS RING M5 |
| 37 | 3510 | ZING COATED LOCK NUT M5 |
| 38 | 3304 | STAINLESS RING L6 |
| 39 | 3361 | STAINLESS SCREW TH 6X40 |
| 40 | 3330 | STAINLESS SCREW TF POZI 5X16 |
| 41 | 3750 A 3799 | CYLINDER LOCK FOR DOUBLE HANDLE |
| 42 | 4202 | PUSH BUTTON |
| 43 | 3226 | COMPRESSION SPRING FOR LOCK CYLINDER |
| 44 | 4200 | DOUBLE HANDLE |

| N° | Ref | Description |
|----|---------|--|
| 45 | 4017 | LEFT END CAP FOR BOTTOM PROFILE |
| 46 | 3345 | SCREW POELIER TORX 6X40 |
| 47 | 3304 | STAINLESS RING L6 |
| 48 | 3503 | ZING COATED LOCK NUT M6 |
| 49 | | ELECTRIC WIRE FORD TRANSIT |
| 50 | 3352 | STAINLESS SCREW TRL POELIER 6X50 |
| 51 | 3248 | STAINLESS RING LL5 |
| 52 | 3510 | ZING COATED LOCK NUT M5 |
| 53 | 3503 | ZING COATED LOCK NUT M6 |
| 54 | 3360 | STAINLESS SCREW TF POZIDRIV 5X25 |
| 55 | 6455 | TENSIONER BRACKET FORD TRANSIT |
| 56 | 6456 | TENSIONER HOOK FOR BRACKET FORD TRANSIT |
| 57 | 3304 | STAINLESS RING L6 |
| 58 | 3503 | ZING COATED LOCK NUT M6 |
| 59 | 4004 | TOP SLAT END CAP |
| 60 | 2005 | INNER SLAT SEAL V2 (ML) |
| 61 | 4003 | RIGHT END CAP FOR 30MM SLAT |
| 62 | 8113 30 | FASTENNER KIT 30MM SLAT V2 |
| 63 | 1009 | ALUMINIUM SLAT 30MM V2 (ML) |
| 64 | 2024 | SIDE TRACKS SEAL (ML) |
| 65 | 3307 | RING AZ5 |
| 66 | 3306 | STAINLESS SCREW TH 5X10 |
| 67 | 4201 | PLASTIC RING FOR DOUBLE HANDLE |
| 68 | 3319 | STAINLESS RING M5 |
| 69 | 3324 | STAINLESS SCREW TC 5X12 POZIDRIV |
| 70 | 4018 | LEFT END CAP FOR BOTTOM PROFILE |
| 71 | 1101 | BOTTOM ALUMINIUM PROFILE (ML) |
| 72 | 2010 | BOTTOM SEAL (ML) |
| 73 | 4251 | FIXATION RODE BEARING |
| 74 | 3213 | LOCKING RODE |
| 75 | 3207 | SPRING FOR LOCKING RODE |
| 76 | 1200 | ALUMINIUM COVER PROFILE (ML) |
| 77 | 4208 | CAP COVER |
| 78 | 3335 | STAINLESS SCREW TRL POELIER 6X25 |
| 79 | 6057 | RIGHT SIDE PANEL CONECTION |
| 80 | 6055 | RIGHT SIDE PANEL FORD TRANSIT |
| 81 | 3371 | STAINLESS BETA PIN 2.5 |
| 82 | 6613 | CLIP SEAL (ML) |
| 83 | 3139 | BALANCER BRACKET |
| 84 | 3507 | STAINLESS SCREW TH 6X14 |
| 85 | 8117 | COMPLETE UPPER STOP FOR DOUBLE HANDLE |
| 86 | 8115 | BOTTOM BLOCING STRIKER FOR DOUBLE HANDLE |
| 87 | 3378 | ALUMINIUM / STEEL RIVET 4.8X10 |
| 88 | 6458 | PROTECTION COVER FORD TRANSIT |