

SHUTTER

Alu40

front roll



Alu40 front roll

The Alu40 front roll shutter is made to measure with double-walled extruded slats of 40mm height.

The door can be used to close compartments or as loading access door in all kind of vehicles as replacement of conventional swing doors to optimise the space inside and outside.

It's delivered in different parts ready to install:

- 1 assembled shutter
- 1 pair of side tracks already drilled
- 1 balancer
- 1 packet of accessories



Maximum / Minimum product dimensions

Maximum Height	2200 mm
Maximum Width	2500 mm
Minimum Width	355 mm
Maximum surface area	4 m ²
Weight of the shutter /m ²	11 Kg

The SHUTTER
system
Alu40 front roll
Personnalization

The **ALU40 front roll** shutter model is fully customizable:
colour finish of the components, tracks models, closing system and options:
(bended tracks, pull strap, interior unlocking, sensors, LED lighting integrated, electric locking system).

You can personnalized your shutter according to the below specifications:

1. COLOUR FINISH OF THE COMPONENTS

The standard colour finish is a powder coated epoxy paint grey RAL 7035 or white RAL 9010.
We also propose several usual RAL colour kept in stock or any others RAL colour on demand following shutter quantities.
Our shutters are also available in anodized finish.



Examples of
COLOUR FINISH



DOUBLE HANDLE
personalized

BAR LIFT HANDLE
with personalized logo

2. THE CLOSING SYSTEM

The closing of the shutter
is done by different possibilities of handle
with or without key.

It's possible to supply the same key number
for different shutters on a same order
if many doors equip the same vehicle.

Built-in
HANDLE

Double
HANDLE

Bar lift
HANDLE



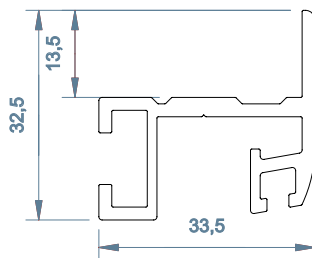
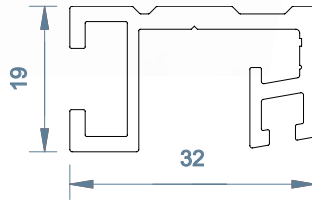


3. SIDE TRACKS MODELS

We propose 2 kind of side tracks following bodywork possibilities:

Standard side tracks

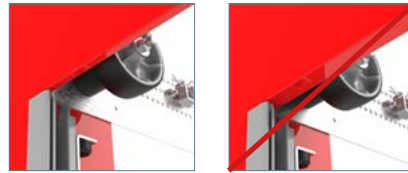
The standard side tracks can be installed in any bodywork configuration. It's a simple «U» shape in which the shutter glide.



Overlapping side tracks

The overlapping side track required a specific construction.

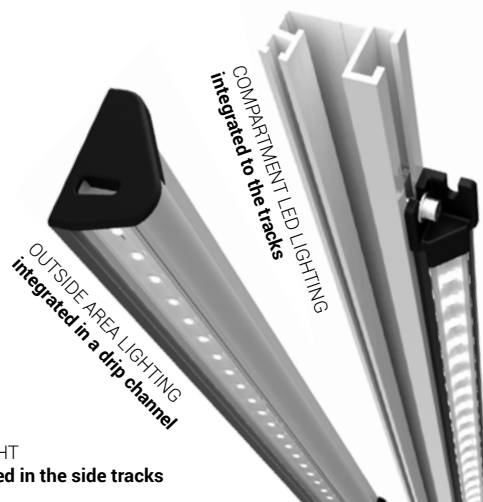
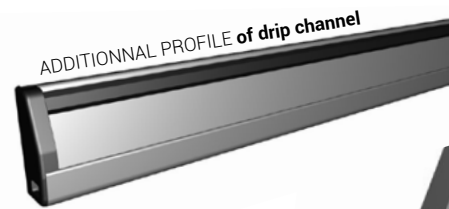
As the tracks overlap the vehicle bodywork, then it's necessary to have a header thickness < 9mm to let free the shutter way to go out of its tracks (see details below).



4. OPTIONNAL EQUIPMENTS

Many additional options are available on demand to answer each requirement:

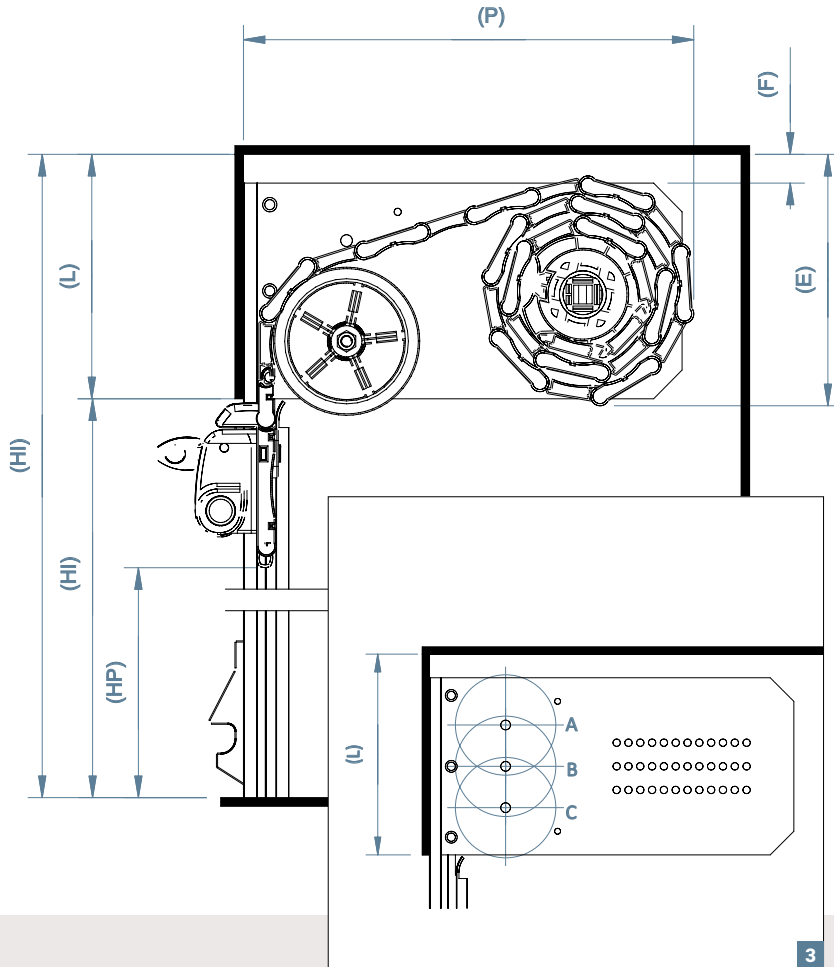
- Bended tracks following your drawing
- Pull strap to catch the shutter handle when installed too high
- Sill plate and drip channel profiles for a better handling of water rejects
- Sensors for automatic compartment lighting when opening the shutters
- LED compartment lighting integrated in the side tracks or in a special drip channel profile
- Electric locking system
- Interior unlocking



LED LIGHT integrated in the side tracks

BENDING of the tracks following your drawing

The SHUTTER system
Alu40 front roll
Setting up

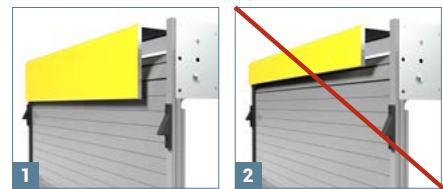


	Description
HI	Interior Height
HO	Opening Height
HP	Passing Height
L	Header
P	Depth
LP	Passing Width
LER	Total Width

To remember :

$HI = HO + L$
 $HP = HO - 100 \text{ mm}$
 $LP = LER - 60 \text{ mm}$

As difference from classical swing door, **a shutter required a top header panel** in order to hide rolling mechanism (*picture 1*).



The articulation of the shutter's slats in the top part **shouldn't be visible from the outside of the vehicle**.

The shutter should remain straight all along the opening (*picture 2*).

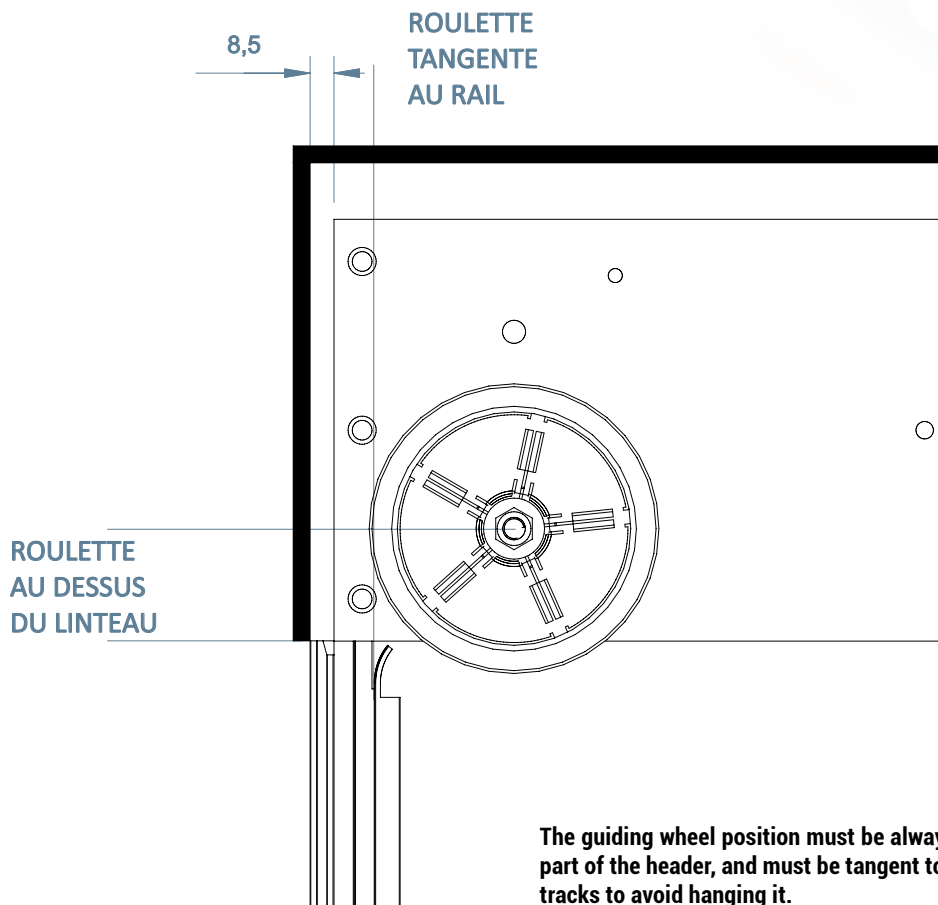
The necessary header dimension to prepare and space required in the compartment to roll the shutter is defined following shutter Opening Height and guiding wheel position (Picture 3).

The board beside will help you to determinate the necessary space to install your roller shutter.

Internal dimensions (in mm)

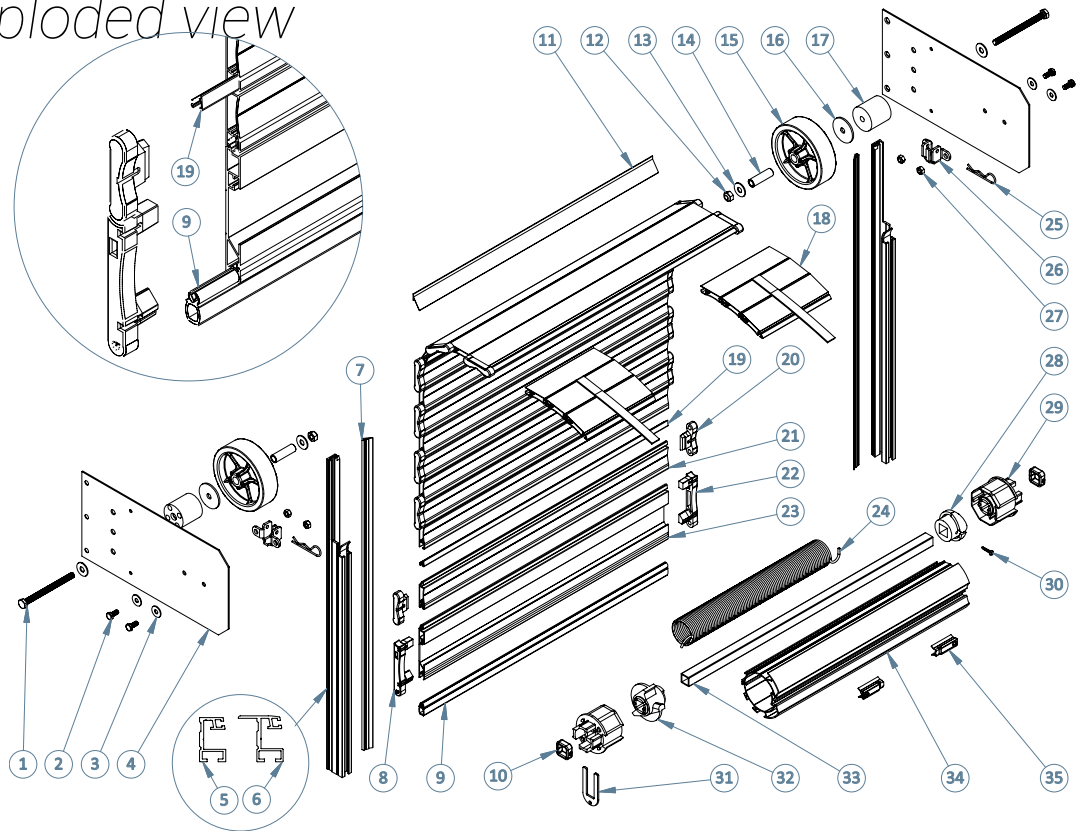
Turns of tension	Opening Height (H.O)	L minimum			P	E	F
		A	B	C			
2	0 à 800	80	90	120	320	190	10
3	80 à 1100	80	100	130	260	180	20
4	1101 à 1600	100	110	140	290	200	30
5	1601 à 2100	110	120	150	310	220	40

The SHUTTER
system
Alu40 front roll
Setting up



The guiding wheel position must be always above the bottom part of the header, and must be tangent to the entrance of the tracks to avoid hanging it.

The SHUTTER
system
Alu40 front roll
Exploded view



Alu40 front roll
elements list

N°	Ref	Description
1	3300	STAINLESS SCREW TH 8X100
2	3507	ZING COATED SCREW TH 6X14
3	3502	ZING COATED RING L6
4	3275	ALU40 SIDE PANEL
5	1300	STANDARD SIDE TRACK (ML)
6	1305	OVERLAPPING SIDE TRACKS (ML)
7	2024	SIDE TRACKS SEAL (ML)
8	4017	LEFT END CAP FOR BOTTOM PROFILE
9	2010	BOTTOM SEAL (ML)
10	3104	STEEL STIRUP WITH SCREW
11	2030	TOP SEAL (ML)
12	3506	ZING COATED LOCK NUT M8
13	3505	ZING COATED RING L8
14	3109	STEEL SPACER
15	4114	GUIDING WHEEL DIAMETER 100MM
16	3523	ZING COATED RING M8X40X2.5
17	4107	PVC SPACER
18	8113 30	FASTENNER KIT SLATS 30MM

N°	Ref	Description
19	2005	INNER SLAT SEAL (ML)
20	4016	END CAP FOR 40MM SLATS
21	1005	ALUMINIUM SLAT 40MM V2 (ML)
22	4018	RIGHT END CAP FOR BOTTOM PROFILE
23	1101	BOTTOM ALUMINIUM PROFILE (ML)
24		SPRING
25	3371	STAINLESS BETA PIN 2.5
26	3139	BALANCER BRACKET
27	3503	ZING COATED LOCK NUT M6
28	4104	FIX SPRING BRACKET FOR BALANCER 62MM
29	4100	END CAP FOR BALANCER 62MM
30	3309	STAINLESS SCREW TCBL POZIDRIV 3.9X19
31	3108	BLOCKING FORK
32	4102	MOBILE SPRING BRACKET FOR BALANCER
33	3100	SQUARE TUBE 16X16X1.5 (ML)
34	1950	ALUMINIUM BALANCER TUBE (ML)
35	3106	FASTENNER FOR ALUMINIUM TUBE