

SHUTTER

Alu30
IZY



MCD
The **Aluminium**
Roller shutter
for specials vehicles

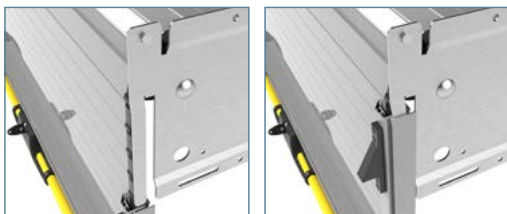
Alu30 IZY

The Alu30 IZY shutter is made to measure with double-walled extruded slats of 30mm height.

The door can be used to close compartments or as loading access door in all kind of vehicles as replacement of conventional swing doors to optimise the space inside and outside.

As difference from the Alu30 front roll standard system, the IZY version is delivered preassembled in the shape of a cassette bloc on which the side tracks are connected in order to install the whole shutter directly in the opening (see drawing below and installation instructions for more details).

This system provide a lot of installation time saving by reducing the montage to about 20 minutes only.



It's delivered in different parts ready to install:

- 1 cassette bloc ready to install
- 1 pair of side tracks drilled
- 1 packet of accessories



Maximum / Minimum product dimensions

Maximum Height	2200 mm
Maximum Width	2500 mm
Minimum Width	355 mm
Maximum surface area	4 m ²
Weight of the shutter /m ²	12 Kg

The SHUTTERS
systems
Alu30 IZY
Personalization

The **ALU30 IZY** shutter model is fully customizable:
colour finish of the components, tracks models, closing system and options:
(bended tracks, pull strap, interior unlocking, sensors, LED lighting integrated, electric locking system).

You can personalised your shutter according to the below specifications:

1. COLOUR FINISH OF THE COMPONENTS

The standard colour finish is a powder coated epoxy paint grey RAL 7035 or a white RAL 9010.
We also propose several usual RAL colour kept in stock or any others RAL colour on demand following shutter quantities.

Our shutters are also available in anodized finish.



Examples of
COLOUR FINISH



DOUBLE HANDLE
personalized



BAR LIFT HANDLE
with personalized logo

2. THE CLOSING SYSTEM

The closing of the shutter
is done by different possibilities of handle
with or without key.

It's possible to supply the same key number
for different shutters on a same order
if many doors equip the same vehicle.

Built-in
HANDLE



Double
HANDLE



Bar lift
HANDLE



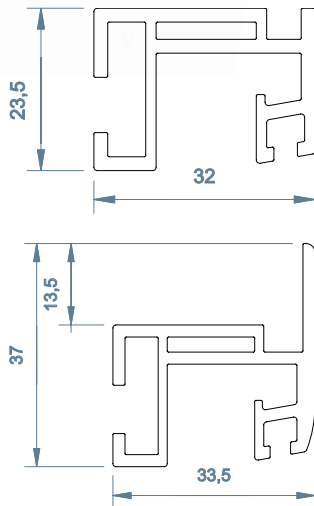


3. SIDE TRACKS MODELS

We propose 2 kind of side tracks following bodywork possibilities:

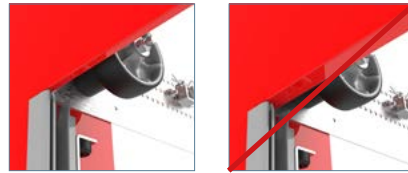
IZY standard side tracks

The standard track can be installed in any bodywork configuration. It's a simple «U» shape in which the shutter glide.



IZY overlapping side tracks

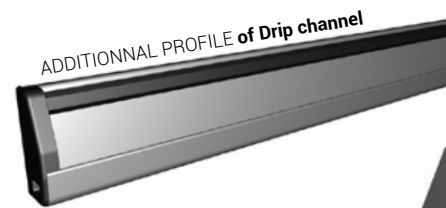
The overlapping side track required a specific construction : As the track overlap the vehicle bodywork, then it's necessary to have a header thickness < 9mm to let free the shutter way to go out of its tracks (see details below).



4. OPTIONNAL EQUIPMENTS

Many additionnal options are available on demand to answer each requirement :

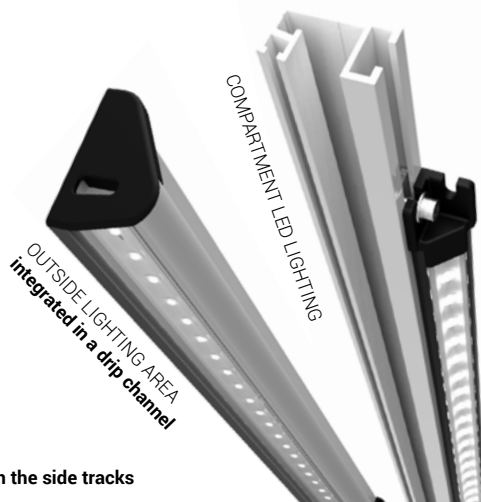
- Bended tracks following your drawing
- Pull strap to catch the shutter handle when installed too high
- Sill plate and drip channel for a better handling of water rejects
- Sensors for automatic compartment lighting when opening the shutters
- LED compartment lighting integrated in the side tracks or in a special drip channel profile
- Electric locking system
- Interior unlocking



ADDITIONNALL PROFILE of Drip channel

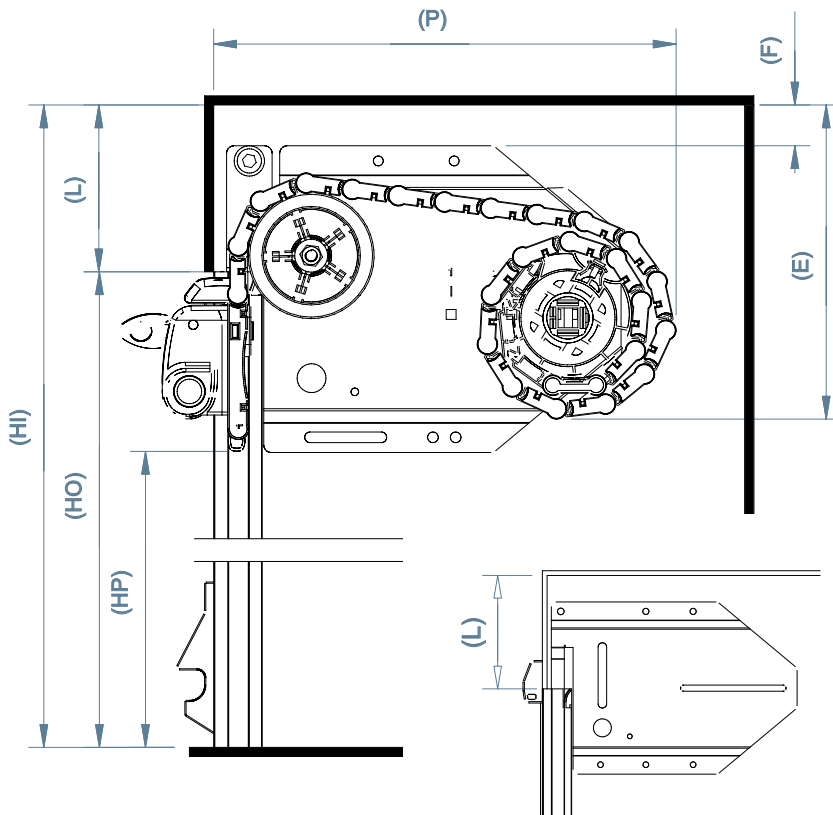


LED LIGHT
integrated in the side tracks



BENDING of the tracks following your drawing

The SHUTTER
system
Alu30 IZY
Setting up



	Description
HI	Interior Height
HO	Opening Height
HP	Passing Height
L	Header
P	Depth
LP	Passing Width
LER	Total Width

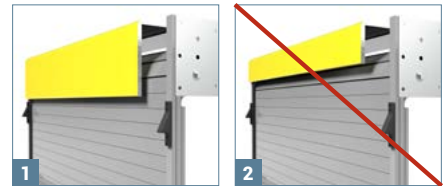
To remember:

$$HI = HO + L$$

$$HP = HO - 100 \text{ mm}$$

$$LP = LER - 70 \text{ mm}$$

As difference from classical swing door, **a shutter required a top header panel** in order to hide rolling mechanism (*picture 1*).



The articulation of the shutter's slats in the top part **shouldn't be visible from the outside of the vehicle**.

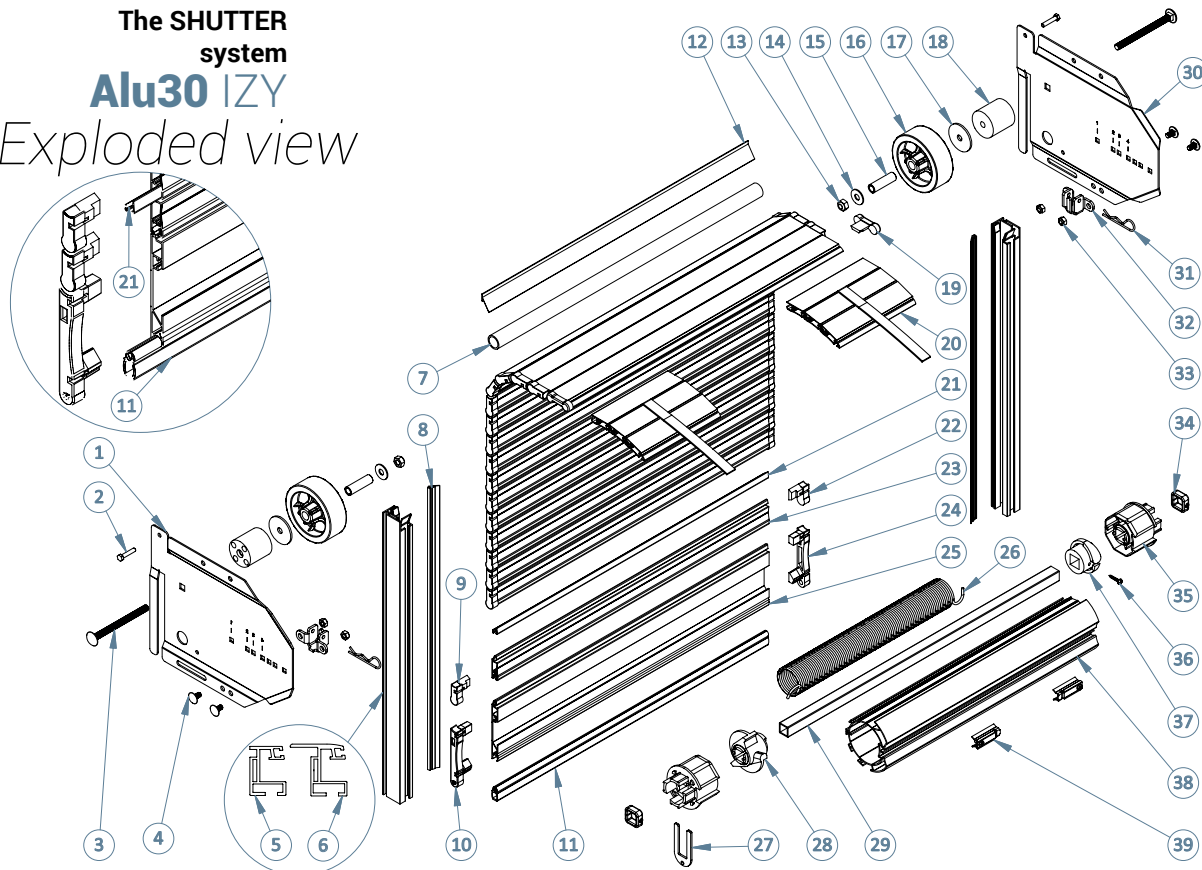
The shutter should remain straight all along the opening (*picture 2*).

The board beside will help you to determinate the necessary space available for shutter's installation following its dimensions.

Internal dimensions (in mm)

Turns of tension	Opening Height	L	P	E
2	0 à 715	100	265	170
3	716 à 1190	100	285	190
4	1191 à 1725	100	310	205
5	1726 à 2400	100	345	225

The SHUTTER
system
Alu30 IZY
Exploded view



Alu30 IZY
elements list

N°	Ref	Description
1	3193	ALU30 IZY LEFT SIDE PANEL
2	3343	STAINLESS SCREW TH5X25
3	3339	STAINLESS SCREW TRCC M8X100
4	3359	STAINLESS SCREW TRCC C.BAS M6X12
5	1304	IZY STANDARD SIDE TRACKS (ML)
6	1303	IZY OVERLAPPING SIDE TRACKS (ML)
7	1400	ALUMINIUM TUBE DIAMETER 20MM (ML)
8	2024	SIDE TRACKS SEAL (ML)
9	4002	LEFT END CAP FOR 30MM SLAT
10	4017	LEFT END CAP FOR BOTTOM PROFILE
11	2010	BOTTOM SEAL (ML)
12	2030	TOP SEAL (ML)
13	3506	ZING COATED LOCK NUT M8
14	3301	STAINLESS RING L8
15	3109	STEEL SPACER
16	4110	GUIDING WHEEL DIAMETER 80MM
17	3523	ZING COATED RING M8X40X2.5
18	4107	NYLON SPACER
19	4004	TOP SLAT END CAP
20	8113 30	FASTENNER KIT SLATS 30MM

N°	Ref	Description
21	2005	INNER SLAT SEAL (ML)
22	4003	RIGHT END CAP FOR 30MM SLAT
23	1009	ALUMINIUM SLAT 30MM V2 (ML)
24	4018	RIGHT END CAP FOR BOTTOM PROFILE
25	1101	BOTTOM ALUMINIUM PROFILE (ML)
26		SPRING
27	3108	BLOCKING FORK
28	4102	MOBILE SPRING BRACKET FOR BALANCER
29	3100	SQUARE TUBE 16X16X1.5 (ML)
30	3194	ALU30 IZY RIGHT SIDE PANEL
31	3371	STAINLESS BETA PIN 2.5
32	3139	BALANCER BRACKET
33	3503	ZING COATED LOCK NUT M6
34	3104	STEEL STIRUP WITH SCREW
35	4100	END CAP FOR BALANCER
36	3309	STAINLESS SCREW TCBL POZIDRIV 3.9X19
37	4104	FIX SPRING BRACKET FOR BALANCER
38	1950	ALUMINIUM BALANCER TUBE (ML)
39	3106	FASTENNER FOR ALUMINIUM BALANCER TUBE